

Original Article



OPEN ACCESS

Received: Aug 9, 2018

Revised: Aug 21, 2018

Accepted: Aug 23, 2018

Correspondence to

Sang-Ha Kim, MD, PhD

Department of Internal Medicine, Yonsei University Wonju College of Medicine, 20 Ilsan-ro Wonju 26426, Korea.

Tel: +82-33-741-0926

Fax: +82-33-741-0928

E-mail: sanghakim@yonsei.ac.kr

Copyright © 2019 The Korean Academy of Asthma, Allergy and Clinical Immunology · The Korean Academy of Pediatric Allergy and Respiratory Disease

This is an Open Access article distributed under the terms of the Creative Commons Attribution Non-Commercial License (<https://creativecommons.org/licenses/by-nc/4.0/>) which permits unrestricted non-commercial use, distribution, and reproduction in any medium, provided the original work is properly cited.

ORCID iDs

Beomsu Shin

<https://orcid.org/0000-0002-8449-0195>

Ji-Ho Lee

<https://orcid.org/0000-0001-8744-156X>

Seok Jeong Lee

<https://orcid.org/0000-0001-6648-5985>

Myoung Kyu Lee

<https://orcid.org/0000-0002-2450-4882>

Won-Yeon Lee

<https://orcid.org/0000-0002-5461-6770>

Sang-Ha Kim

<https://orcid.org/0000-0002-1763-5366>

Disclosure

There are no financial or other issues that might lead to conflict of interest.

Prevalence and Clinical Features of Drug Reactions With Eosinophilia and Systemic Symptoms Syndrome Caused by Antituberculosis Drugs: A Retrospective Cohort Study

Ho Yeon Jung, Sunmin Park, Beomsu Shin , Ji-Ho Lee , Seok Jeong Lee , Myoung Kyu Lee , Won-Yeon Lee , Suk Joong Yong, Sang-Ha Kim

Department of Internal Medicine, Yonsei University Wonju College of Medicine, Wonju, Korea

ABSTRACT

Purpose: Although there have been reported cases of drug reactions with eosinophilia and systemic symptoms (DRESS) syndrome caused by antituberculosis drugs, there has been no research to examine its prevalence. This study assessed the prevalence and clinical characteristics of DRESS syndrome caused by antituberculosis drugs.

Methods: The electronic medical records of a cohort consisting of adult patients diagnosed with tuberculosis between July 2006 and June 2010 were reviewed and retrospectively inspected. We searched the surveillance system for adverse drug reactions and the electronic medical records to identify patients who reported severe cutaneous adverse reactions to antituberculosis drugs. These patients were then re-assessed using a European Registry of Severe Cutaneous Adverse Reactions to Drugs and Collection of Biological Samples (RegiSCAR) scoring system. Clinical characteristics, including the symptoms and latency of DRESS syndrome, the therapeutic dosage and period of steroids, and the final duration of tuberculosis therapy, were examined.

Results: Of the 1,253 adult patients with tuberculosis receiving antituberculosis drugs, 15 were identified as potential cases of DRESS syndrome (prevalence of 1.2%). Ethambutol was the most frequently used drug (53.5%), followed by rifampicin (26.7%), pyrazinamide (20.0%), streptomycin (13.3%), and isoniazid (6.7%). The median latency after day 1 of antituberculosis medication was 42 days. The median daily dose of steroids, expressed in prednisone-equivalent units, was 33-mg/day, and the median dosing period was 14 days. The duration of tuberculosis treatment was 76 days longer than the standard treatment period of 180 days. There was a significant difference in the peak eosinophil counts of DRESS syndrome patients according to RegiSCAR scores. Moreover, there was a significant quantitative correlation between the RegiSCAR score and peak eosinophil count. A negative correlation was also found between the RegiSCAR score and latency.

Conclusions: This study confirmed the prevalence of DRESS syndrome in a cohort of adult patients with tuberculosis.

Keywords: Adverse drug reaction; drug hypersensitivity syndrome; antituberculosis; prevalence

INTRODUCTION

Drug reactions with eosinophilia and systemic symptoms (DRESS) syndrome refers to a potentially life-threatening adverse drug reaction that presents as a skin rash, the presence of eosinophilia in peripheral blood, as well as systemic symptoms caused by fever, enlarged lymph nodes and hepatitis.^{1,2} With a mortality rate of approximately 10%, DRESS syndrome can cause the involvement of internal organs and accordingly, requires accurate and prompt diagnosis and treatment.¹ DRESS syndrome is caused by drugs, such as carbamazepine, allopurinol, phenytoin, phenobarbital, lamotrigine, sulfasalazine and vancomycin, and generally occurs 2-8 weeks after administration of the causative drug.³

Tuberculosis plays a critical role in healthcare and social issues worldwide. The standard regimen of treatment for tuberculosis involves administration of antituberculosis drugs over a period of 6 months. Antituberculosis drugs are classified as either primary or secondary. Primary drugs are the first-line therapy for tuberculosis as they are highly effective with fewer side effects. Standard primary treatments include isoniazid (INH), ethambutol (EMB), rifampicin (RFP) and pyrazinamide (PZA).⁴ Adverse drug reactions caused by antituberculosis drugs increase the probability of treatment failure, mortality and morbidity. As a result, an increased economic burden can occur due to prolonged hospitalization, unscheduled outpatient visits, and additional tests.⁵ A few studies have sought to determine the prevalence of severe cutaneous adverse drug reactions (SCAR) caused by antituberculosis drugs. For example, the prevalence of SCAR was reported as approximately 4%–8% in human immunodeficiency virus (HIV)-uninfected patients,^{6,7} but no study has yet confirmed the prevalence of DRESS syndrome, a type of SCAR caused by antituberculosis drugs.

We performed a review of the electronic medical records of all adult patients who were prescribed antituberculosis drugs. Patients were further classified as potential SCAR cases. SCAR cases were retrospectively reconfirmed according to the DRESS syndrome diagnosis criteria⁸ suggested by the European Registry of Severe Cutaneous Adverse Reactions to Drugs and Collection of Biological Samples (RegiSCAR) group. Following confirmation and classification by RegiSCAR scoring, the prevalence and clinical characteristics of DRESS syndrome among patients who were administered antituberculosis drugs were evaluated.

MATERIALS AND METHODS

Study design and setting

This study was designed as a retrospective cohort study and involved adult patients (aged ≥ 19 years) with tuberculosis who had been receiving antituberculosis drugs for more than 2 weeks and were followed up more than twice between July 2006 and Jun 2010. We performed a retrospective inspection of the electronic medical records of a university hospital, a tertiary healthcare center that treats nearly 400 patients with tuberculosis annually and employs doctors who specialize tuberculosis.

Inclusion criteria for potential cases

Potential cases were defined as patients who had already been entered into the surveillance system for adverse drug reactions in hospital, who had SCAR related to the administration of antituberculosis drugs, and who met the search requirements used for the search of the electronic medical records. The latter were set to select for patients who required hospitalization for more

than 2 days while being on antituberculosis drugs^{8,9} and who requested a consultation from the Department of Dermatology or Allergy due to a generalized skin rash caused by the drugs. Patients also had to meet the following requirements: ≥ 500 eosinophil count in peripheral blood, fever of $\geq 38^{\circ}\text{C}$, $\geq 2 \times$ the upper normal limits of aspartate aminotransferase or alanine aminotransferase, and creatinine levels ≥ 2.0 or a 2-fold increase in the baseline value of creatinine.

Validation of cases with the RegiSCAR scoring system

At first, the evaluation of drug causality was conducted based on the World Health Organization-Uppsala Monitoring Centre (WHO-UMC) criteria by 2 specialists who were familiar with WHO-UMC causality categories.¹⁰ We rechecked the responses to dechallenge or rechallenge procedure with suspected drugs for the causality assessment of DRESS syndrome. All the potential cases of DRESS syndrome caused by antituberculosis drugs were reassessed based on the diagnostic criteria and scoring system suggested by the RegiSCAR group. Scoring was performed in cases with a body temperature $\geq 38^{\circ}\text{C}$, enlarged lymph nodes, eosinophil counts in peripheral blood, atypical lymphocytes, skin rash (extent, morphology and biopsy findings), involvement of internal organs (liver, kidney, lung, muscle, heart, pancreas, *etc.*), and a symptom duration of ≥ 15 days; serologic studies were performed to exclude other causes, including infection.⁸ Patients were classified according to the final score calculated by the scoring system: for example, ≥ 6 was coded as definite, 4–5 as probable, 2–3 as possible and ≤ 1 as no sign of DRESS syndrome.

Clinical and laboratory examinations

According to the Korean guidelines for tuberculosis, routine follow-up tests conducted during administration of antituberculosis drugs include complete blood counts with differential, routine liver function tests, sputum smear and culture for tuberculosis, and chest X-rays. Such follow-up tests were performed in the first 2 weeks after the beginning of treatment and once per month thereafter. In cases of SCAR that occurred during the administration of antituberculosis drugs and presented as a general skin rash that required hospitalization, additional tests were also conducted. Additional tests included blood culture; serology for A/B/C viral hepatitis; serological test for Epstein-Barr virus (EBV), cytomegalovirus (CMV), herpes simplex virus (HSV) and HIV; sputum culture for bacterial pneumonia; serological test on mycoplasma pneumonia; antinuclear antibodies (ANA); and skin biopsy. In some cases, a chest or abdominal computed tomography (CT) for differentiation the cause of fever was performed. To determine the causative drug, a patch test was conducted with 5 antituberculosis drugs (INH, EMB, RFP, PZA, and streptomycin [SM]) at a 1% dilution during or after tuberculosis treatment. Comorbidities requiring treatment and medicines other than the antituberculosis drugs that were administered to treat such comorbidities were also reviewed.

Outcome measures and assessment

The onset of DRESS syndrome was defined as the start of any clinical symptoms and signs that could indicate DRESS syndrome. Latency was defined as the time from the start of the antituberculosis drug to the onset of DRESS syndrome. The onset of each reaction, including skin reactions, eosinophilia or systemic symptoms, was determined to be related to drug administration. Any drug administered with the antituberculosis drugs that was previously used by the patient for ≥ 6 months without a cutaneous adverse drug reaction was considered a low-possibility causative drug.

Skin reactions were classified as diffuse infiltrative maculopapules, exfoliation, facial edema, purpura and urticaria. The percentage of total body surface area involved by the skin reaction was also taken into consideration. The first application, median maintenance dose and dosing

period of systemic steroids after the onset of DRESS syndrome were also determined. The dosages of systemic steroids were compared in terms of an equivalent dose of prednisolone. Additionally, the rechallenge of antituberculosis drugs for identifying the causative drug, the dose interval between drugs, the additional time needed for tuberculosis treatment due to development of DRESS syndrome and the time spent for dosing were determined.

Statistical analysis

Categorical and dichotomous variables are expressed in absolute numbers and percentages, whereas continuous variables are expressed as mean values and quartiles. The assay to confirm differences among the 3 groups (possible, probable and definite) was performed through RegiSCAR scoring. A Kruskal-Wallis one-way analysis of variance and a χ^2 test were used for continuous and categorical variables, respectively. By excluding treatment periods that were < 180 days according to the RegiSCAR score, only the probable and definite groups remained. In these cases, the Mann-Whitney test was used for analysis. The correlation between RegiSCAR scores and continuous variables was determined using Pearson's correlation coefficient obtained from the simple correlation analysis. All significance tests were 2-sided, and $P < 0.05$ was considered statistically significant.

Ethics statement

This study protocol was approved by the Institutional Review Board of Yonsei University Wonju Severance Christian Hospital (CR318053).

RESULTS

Prevalence of DRESS syndrome caused by antituberculosis medications

Of the cohort of tuberculosis patients at a single university hospital over the course of 4 years, 1,253 patients at aged ≥ 19 years took antituberculosis drugs for more than 2 weeks and had follow-up tests ≥ 2 times. Among them, 9 had already been reported to the hospital surveillance system for adverse drug reactions for having SCAR associated with the administration of antituberculosis drugs.

Among the 406 patients who had to be hospitalized for ≥ 2 days following the administration of antituberculosis drugs, 144 required consultation from the Department of Dermatology or Allergy due to a generalized skin rash during hospitalization. Among them, 6 had other clinical findings, such as eosinophilia in peripheral blood, fever, and increased liver enzymes and creatinine levels. In other words, 15 of the 1,253 adult patients who received antituberculosis drugs met the inclusion criteria for DRESS syndrome. This indicates that DRESS syndrome is present in this population at a prevalence of 1.2% (**Fig. 1**).

Baseline and clinical characteristics of study participants

The mean age (interquartile range [IQR]) of the 15 patients identified as potential cases of DRESS syndrome was 65 (48-74) years old. Among them, eight patients were male (53.3%) (**Table 1**). Eleven patients were diagnosed with pulmonary tuberculosis; 3 patients in the latter group had endobronchial tuberculosis, 2 had pleural tuberculosis, and 2 had tuberculous lymphadenitis (including 1 patient with tuberculous meningitis) (**Table 1**).

The median time of latency was 42 days (IQR 28-71) (**Tables 1**). The time from the administration of antituberculosis medication to the observation of eosinophilia in

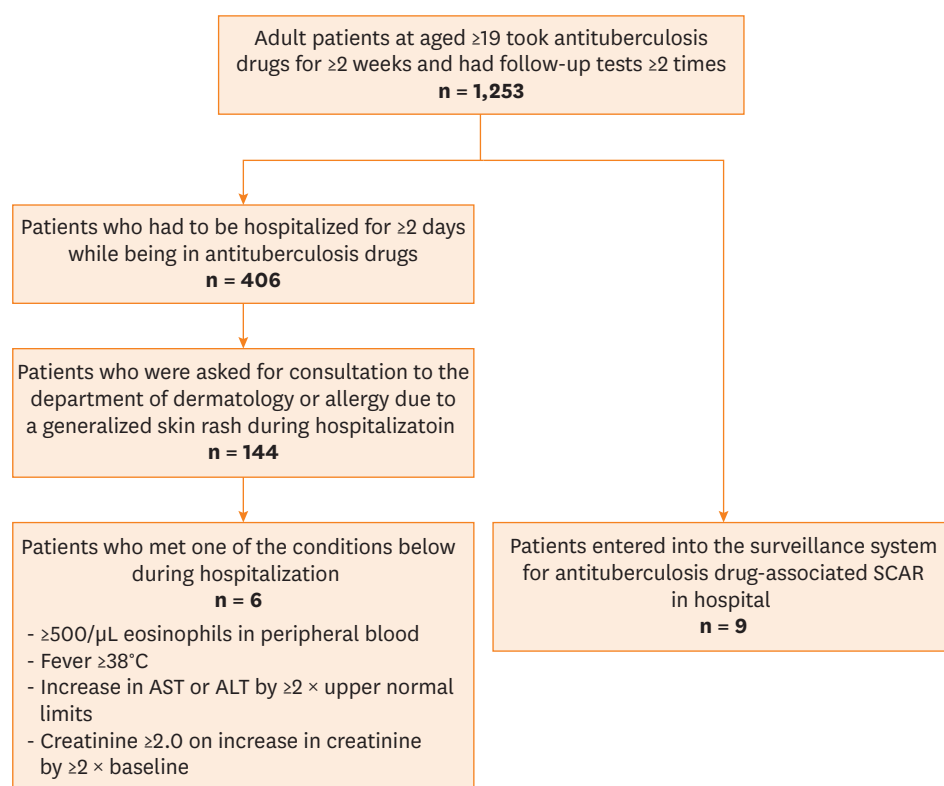


Fig. 1. This flow diagram shows that, among the ≥ 19-year-old patients who were receiving antituberculosis drugs who also required hospitalization for generalized skin rash, those who met the DRESS syndrome criteria were selected as the study subjects.

DRESS, drug reactions with eosinophilia and systemic symptoms; AST, aspartate aminotransferase; ALT, alanine aminotransferase; SCAR, severe cutaneous adverse reactions.

Table 1. Clinical characteristics of potential DRESS syndrome cases

No.	Age	Sex	Tuberculous diseases	Latency (day)	Extent of skin lesions (%)	Morphology of skin lesions*	Eosinophils (/μL)	Fever ≥ 38°C	Enlarged lymph nodes	AST (U/L)	ALT (U/L)	Creatinine (mg/dL)	Comorbidities
1	54	M	Pulmonary	131	100	1	1,010	+	NA	24	16	0.4	
2	19	M	Lymphadenitis, Meningitis	71	100	1	2,170	+	+	19	14	0.8	
3	65	F	Pleural	14	100	1	1,150	+	NA	33	25	0.5	
4	72	M	Pulmonary	36	36	1	1,010	+	NA	39	23	2.1	
5	75	F	Pulmonary	28	100	1	1,680	+	NA	229	123	0.6	
6	23	F	Pulmonary	28	100	1	2,790	+	+	36	34	0.6	
7	67	M	Pulmonary	72	18	1	1,920	+	NA	53	13	2.4	COPD, Hypertension
8	61	M	Pulmonary	11	100	1,2,3	7,610	+	+	377	559	2.1	Allopurinol-induced DRESS syndrome
9	65	F	Pulmonary, Endobronchial	98	100	1	3,120	+	NA	135	114	4.0	Amyloidosis
10	88	M	Pleural	65	100	1	3,860	+	+	61	56	0.7	SLE
11	48	M	Pulmonary, Endobronchial	32	100	1,2,3	10,480	+	+	139	333	0.7	
12	74	F	Pulmonary	61	36	1	2,230	+	–	41	56	0.8	Hypertension
13	81	F	Pulmonary, Endobronchial	42	100	1,2,3	2,270	+	–	180	214	0.7	Diabetes, Hypertension
14	57	M	Pulmonary	69	100	1,2	4,980	–	+	28	20	0.8	Diabetes
15	44	F	Lymphadenitis	22	100	1,5	4,920	+	+	73	19	9.7	ESRD
Median	65			42			2,270			53	34	0.8	

DRESS, drug reactions with eosinophilia and systemic symptoms; AST, aspartate aminotransferase; ALT, alanine aminotransferase; NA, not available; COPD, chronic obstructive pulmonary disease; SLE, systemic lupus erythematosus; ESRD, end stage renal disease.

*Morphology of skin lesions were classified as diffuse infiltrative maculopapules (1), exfoliation (2), facial edema (3), purpura (4), and urticaria (5).



Fig. 2. Skin symptoms of DRESS syndrome vary and include the following: diffuse infiltrative maculopapules, exfoliation, facial edema and urticaria. (A) Diffuse erythematous papules and plaques on the right forearm and dorsum of hand (patient #8). (B) Diffuse scaly eczematous lesions on the face (patient #13). DRESS, drug reactions with eosinophilia and systemic symptoms.

peripheral blood ($\geq 500/\mu\text{L}$) was 60 days (IQR 30–76). The onset of skin manifestations was observed in all patients and preceded eosinophilia in the peripheral blood. The median time from the onset of skin presentations to the observation of eosinophilia was 4 days (IQR 2–9). Among the skin manifestations, diffuse infiltrative maculopapules was the most common finding observed in all patients; this was followed by exfoliation, which was observed in 4 patients (**Fig. 2**); facial edema, which was observed in three patients; and urticaria, which was observed in one patient. The median peak eosinophil count was 2,270 (IQR 1,680–4,920)/ μL . As for systemic symptoms, fever was observed in 14 patients (93.3%), hepatic involvement was observed in 5 patients (33.3%), and renal involvement was observed in 4 patients (26.6%). Seven of the 9 patients who were evaluated for enlarged lymph nodes showed enlarged lymph nodes (**Table 1**). There were 4 cases of enlarged lymph nodes coincidentally observed via chest and abdominopelvic CT scanning, which were originally performed to evaluate the cause of the patients' fever (**Fig. 3**).

We did not perform serologic tests to differentiate among infectious diseases or other disorders in all patients. Of the 9 patients who were tested, all were determined to be ANA-negative. Additionally, all 12 patients who were tested for A/B/C viral hepatitis turned out to be negative. All 6 patients who were tested for EBV had negative results. All 8 patients who were tested for CMV had negative results. All 6 patients who were tested for HIV tested negative, and 2 of the 7 patients who were tested for HSV turned out to be positive. Human herpes virus type 6 (HHV6) tests were not conducted as the test was unavailable at the time in our hospital.

Causative drugs

The antituberculosis drug confirmed as the causative drug of DRESS syndrome was EMB in 8 cases (53.5%), followed by RFP in 4 cases (26.7%), PZA in 3 cases (20.0%), SM in 2 cases (13.3%) and INH in one case (6.7%) (**Table 2, Fig. 4**). In one case (patient #1), DRESS syndrome was suspected to develop after administration of the antituberculosis drugs

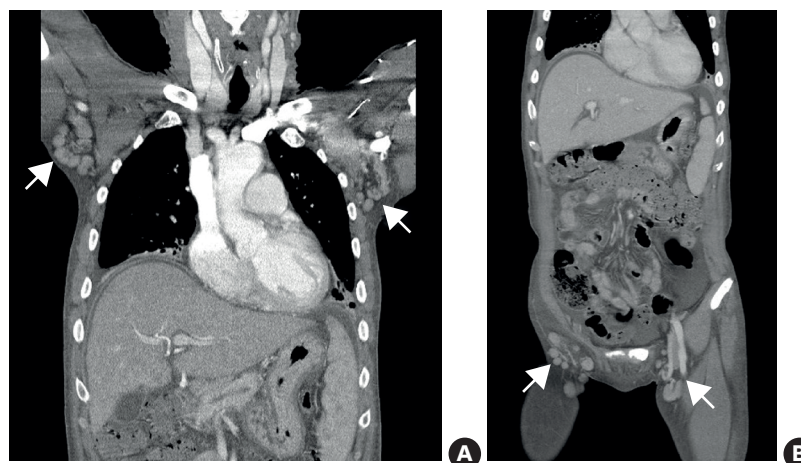


Fig. 3. Enlarged lymph nodes were coincidentally observed by chest and abdominopelvic computed tomography scanning, which was initially conducted to detect the cause of fever in the patient. (A) Multiple lymph node enlargement in both axillary areas are demonstrated. (B) Bilateral inguinal lymphadenopathy in a reactive patient (patient #8).

(INH, EMB, RFP, PZA and SM); however, the causative drug could not be identified. In this context, we did not discontinue and rechallenge. According to the RegiSCAR scoring system, 3 cases of both EMB and RFP and 1 case of INH were identified as “definite.” In terms of the 14 patients with identified causative drugs, one antituberculosis drug was identified as the causative drug in 10 (71.4%), and 2 causative drugs were identified (INH-RFP, EMB-RFP, EMB-RFP, EMB-SM) in 4 of these patients. In our study, patch skin testing was conducted with antituberculosis drugs on 2 patients (#5 and #13). In particular, patient #13 (**Fig. 5**) discontinued all antituberculosis drugs and was maintained on 3 drugs: INH, RFP and PZA except EMB which developed symptoms during the course of rechallenging. Subsequently, SM was also added. On day 26 of SM administration, the patient discontinued SM due to the development of DRESS syndrome, but maintained the rest of drugs until completely cured.

Table 2. Validation data and clinical courses of the study participants

No.	WHO-UMC causality categories	RegiSCAR score	Culprit drugs	Steroid treatment		Duration of anti-tuberculous treatment (day)	De-challenge from onset (day)	Re-challenge from onset (day)	Note
				Amount* (mg)	Duration (day)				
1	Possible	2, possible	HERZS?	6,053	28	176	ND	ND	Death
2	Probable/likely	5, probable	SM	2,764	101	198	6	ND	
3	Probable/likely	4, probable	PZA	367	8	366	11	ND	
4	Probable/likely	3, possible	PZA	590	6	102	30	ND	Transfer
5	Certain	6, definite	INH, RFP	237	11	186	12 [†]	31	Patch test [‡]
6	Certain	5, probable	EMB	297	11	189	1 [†]	8	
7	Probable/likely	4, probable	PZA	31	1	145	19	ND	Transfer
8	Certain	8, definite	EMB	717	3	63	19 [†]	24	Transfer
9	Probable/likely	6, definite	RFP	8,750	27	155	57	ND	Transfer
10	Certain	5, probable	EMB, RFP	3,750	7	185	11 [†]	95	
11	Certain	7, definite	EMB, RFP	4,735	144	277	44 [†]	49	
12	Probable/likely	4, probable	EMB	173	14	270	14	ND	
13	Certain	5, probable	EMB, SM	1,630	76	281	18 [†]	35	Patch test [‡]
14	Probable/likely	5, probable	EMB	1,120	51	244	99	ND	
15	Certain	6, definite	EMB	467	14	268	17 [†]	47	
Median				717	14	189	18	35	

WHO-UMC, World Health Organization-Uppsala Monitoring Centre; RegiSCAR, European Registry of Severe Cutaneous Adverse Reactions to Drugs and Collection of Biological Samples; HERZS, isoniazid + ethambutol + rifampicin + pyrazinamide + streptomycin; INH, isoniazid; EMB, ethambutol; RFP, rifampicin; PZA, pyrazinamide; SM, streptomycin; ND, not done.

*Equivalent dose of prednisolone; [†]This symbol indicates the discontinuation of all antituberculosis drugs (“sequential rechallenging group”). Other cases were sequentially discontinued to determine the causative drug (“sequential dechallenging group”); [‡]This symbol indicates positive results of patch testing with antituberculosis drugs.

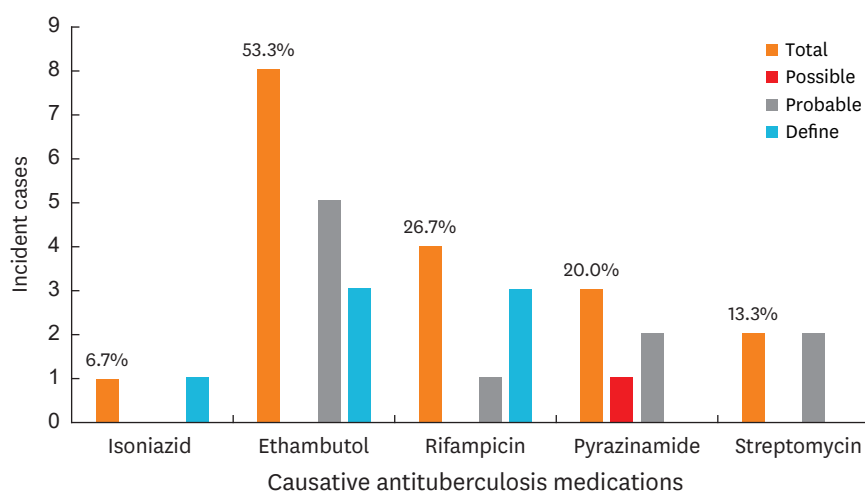


Fig. 4. This figure shows the prevalence rate of DRESS syndrome along with the causative antituberculosis drug. DRESS, drug reactions with eosinophilia and systemic symptoms.

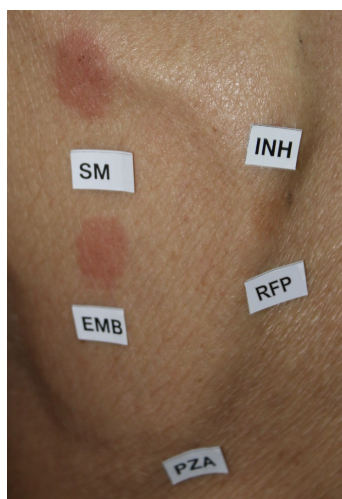


Fig. 5. This figure shows the result of a patch test conducted with the antituberculosis drugs (INH, EMB, RFP, PZA and SM). The patch test was conducted 8 weeks after completion of tuberculosis treatment and was found to be EMB- and SM-positive (patient #13). INH, isoniazid; EMB, ethambutol; RFP, rifampicin; PZA, pyrazinamide; SM, streptomycin.

As a result of patch testing at 8 weeks after a complete cure, the patient was determined to be EMB- and SM-positive. Patient #5 was dechallenged from all the first-line antituberculosis medications; this occurred 15 days after the onset of DRESS syndrome, which was determined to be INH-positive result of patch testing. Subsequently, the patient maintained a regimen of EMB, prothionamide, cycloserine, rifabutin and levofloxacin; developed symptoms during rechallenging RFP; and was then completely cured.

Clinical course and outcome

Fifteen potential cases were classified according to the RegiSCAR scoring system. Of these, 5 were classified as definite (≥ 6 points), 8 were classified as probable (4–5 points), and 2 were classified as possible (2–3 points) (Table 2). In terms of the total dosage of systemic steroids administered, the median steroid dose (in prednisolone-equivalent units) was 717 mg (IQR 297–3,750). Additionally, the median administration period was 14 days (IQR 7–51), and the median daily dosage was 33 mg/day (IQR 22–216) (Table 2).

Table 3. Comparison of the clinical characteristics and outcomes of possible, probable and definite cases of DRESS syndrome as classified by RegiSCAR scoring

Parameters	Total (n = 15)	Possible (n = 2)	Probable (n = 8)	Definite (n = 5)	P value
Age (yr)	65	63	66	61	0.848
Male sex (%)	53.3	100.0	50.0	40.0	0.796
Latency (day)	42	84	63	28	0.299
Peak eosinophils (/ μ L)	2,270	1,010	2,250	4,920	0.039
Steroid dose (mg/day)	33	157	27	33	0.210
Steroid duration (day)	14	17	12.5	14	0.932
TB treatment duration* (day)	189	-	221	186	0.909

DRESS, drug reactions with eosinophilia and systemic symptoms; RegiSCAR, European Registry of Severe Cutaneous Adverse Reactions to Drugs and Collection of Biological Samples; TB, tuberculosis.

*Patients were excluded from the analysis when the duration of the tuberculosis treatment was < 180 days due to either death (1 case) or transfer to another hospital (4 cases).

With the exception of 1 patient who died while receiving antituberculosis drugs, 14 of 15 patients were rechallenged with antituberculosis drugs, resulting in a total mortality of 6.7% (**Table 2**). Among the 14 patients who were rechallenged with antituberculosis drugs, 7 progressively improved after an initial discontinuation of all antituberculosis drugs and a subsequent sequential rechallenge to determine the causative drug. Meanwhile, 7 other patients underwent dechallenging of the antituberculosis drugs by removing them sequentially while regularly checking for improvement. The median time from the onset of DRESS syndrome to dechallenging was 18 days (IQR 11–44) (**Table 2**).

The duration of the standard therapy with antituberculosis drugs was less than 6 months (180 days) in 5 of the 15 patients. Four of these patients were transferred to another hospital on days 102, 145, 65 and 155, respectively, of antituberculosis drug administration, whereas 1 patient died during treatment, on day 176 of antituberculosis drug administration (**Table 2**). Excluding the 5 patients who did not complete the treatment, the median duration of antituberculosis therapy was 256 days (IQR 188–278), which was 76 days longer than the mean treatment period in a standard therapy regimen for tuberculosis.

When classifying the patients as definite, probable and possible according to the RegiSCAR scoring system, the median peak eosinophil counts were 4,920/ μ L, 2,250/ μ L, and 1,010/ μ L, respectively, which differed significantly. However, there was no significant difference in the latent period, steroid dosage or duration of tuberculosis therapy (**Table 3**).

The correlation analysis revealed a statistically significant positive correlation between the RegiSCAR score and the peak eosinophil counts ($R^2 = 0.766$; $P = 0.001$) (**Fig. 6A**).

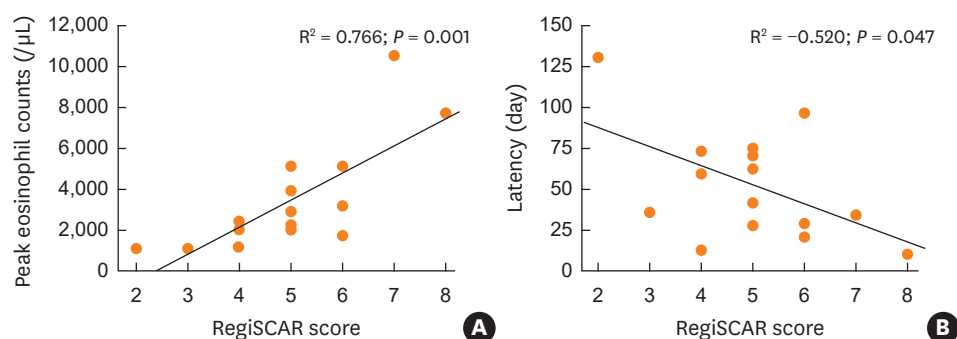


Fig. 6. This figure shows the correlation between the RegiSCAR score and the peak eosinophil counts as well as the latent period. (A) Positive correlation between RegiSCAR scores and peak eosinophil counts. (B) Negative correlation between the RegiSCAR scores and the latent period.
RegiSCAR, European Registry of Severe Cutaneous Adverse Reactions to Drugs and Collection of Biological Samples.

Additionally, a statistically significant negative correlation was found between the RegiSCAR score and the latent period ($R^2 = -0.520$; $P = 0.047$) (**Fig. 6B**).

DISCUSSION

Our retrospective cohort study of adult patients with tuberculosis, the first of its kind, found that the prevalence of DRESS syndrome — one of the SCAR caused by administration of antituberculosis drugs — was 1.2%. EMB was the most common cause of DRESS syndrome, with a prevalence of 53.3% among the first-line antituberculosis drugs; this was followed by RFP (26.7%), PZA (20.0%), SM (13.3%) and INH (6.7%).

There have been a limited number of studies on the prevalence of SCAR requiring the discontinuation of antituberculosis medications. Until now, no study has been conducted to determine the prevalence of DRESS syndrome caused by antituberculosis drugs. Studies conducted on 430 and 156 non-HIV-infected patients receiving antituberculosis drugs in Canada and the UK reported that the prevalences of SCAR were 4% and 8%, respectively.^{6,7} Several demographic differences in the prevalence of SCAR have been found, with a 2.9-fold increase among patients who were ≥ 60 years and a 2.5-fold increase among patients of Asian descent.⁶ Asian patients are also more likely to be at risk of DRESS syndrome in cases of allopurinol or carbamazepine.¹¹ Indeed, in recent studies, the authors suggest a genetic predisposition of DRESS syndrome including antituberculosis drug-associated.^{12,13} In our study, the prevalence of SCAR caused by antituberculosis drugs and requiring hospitalization was 11.5% (144/1,253), which is higher than the figures previously reported for Western countries.

Recent studies¹⁴ that determined antituberculosis drug-associated DRESS syndrome using the French pharmacovigilance database reported RFP as the most common causative drug. However, the 67 reported potential DRESS syndrome cases in the study included indicators other than tuberculosis. Thirty-six of the patients were treated for tuberculosis, and the most common DRESS syndrome-causing drug among them was INH.¹⁴ Combining their study with previously reported studies, they determined that RFP (70.0%) was the most frequently reported causative drug, followed by INH (65.0%), EMB (58.3%), and PZA (48.4%) in a total of 60 cases.¹⁴ Among the 10 antituberculosis drug-associated DRESS syndrome cases that have been reported in Asia so far,^{13,15-23} EMB was the most frequently reported drug (7 cases), followed by INH (5 cases), RFP (4 cases), and PZA (3 cases). Six of these cases were associated with a single antituberculosis drug, 1 case was associated with 2 antituberculosis drugs (EMB-RFP), 1 case was associated with 3 antituberculosis drugs (INH-EMB-PZA), and 2 cases were associated with 4 antituberculosis drugs (INH-EMB-RFP-PZA). In our study of 14 patients in whom the causative drug was identified, 10 patients had 1 causative drug, whereas 4 had 2 causative antituberculosis drugs. As the number of causative drugs was limited to 1 or 2 drugs in more than 70% of patients who both maintained the standard treatment of antituberculosis therapy and developed DRESS syndrome due to antituberculosis drugs, the dechallenge and rechallenge of the drugs to identify the causative drug required a proactive approach. This is because discontinuing first-line antituberculosis therapies and replacing them with a second-line regimen can lead to less effectiveness compared to the first-line therapy. The diminished therapeutic effect may cause toxicity issues and the extension of treatment period to up to 2 years.^{5,24} Given the benefits and risks arising from the discontinuation of antituberculosis drugs due to the onset of SCAR, it is recommend that dechallenging and rechallenging also should be carried out during DRESS

syndrome.²⁵ For pulmonary tuberculosis with a maintenance of infectivity in the first 2 weeks of treatment, the discontinuation of the antituberculosis drug may increase the probability not only of the state of infection in the patient but also of the risk of transmitting it to others, which may lead to significant healthcare problems and social issues. When the dosages of antituberculosis drugs are maintained for more than 2 weeks in patients with pulmonary tuberculosis, infectivity is remarkably decreased. Fortunately, DRESS syndrome develops 2–8 weeks after administration of drugs, suggesting it causes decreased infectivity and activity. The common side effects of antituberculosis drugs that require discontinuation of treatment usually develop within 2–8 weeks,⁷ whereas DRESS syndrome emerges after these common side effects subside. Determination of the adverse reactions attributable to the dechallenging and rechallenging of drugs is considered beneficial and implies that there is a strong need to actively identify the causative drug. In our study, the median latent period from the administration of the antituberculosis drug(s) to the onset of DRESS syndrome was 42 days, suggesting that the infectivity of tuberculosis may have decreased.

Skin testing can be performed with the suspect drug to determine the causative agent behind cutaneous adverse reactions. This test is generally carried out 6 weeks to 6 months after the improvement of skin lesions when the use of systemic steroids or immunosuppressants has been discontinued for 1 month.²⁶ For DRESS syndrome or Stevens-Johnson syndrome to prevent recurrence of SCAR, the commercialized form of the drug can be administered at 0.1% of dilution and, subsequently, increased to a concentration of 1%–10% when the test is negative.²⁶ Previous studies have reported various results depending on the drug used, and there is still a need to conduct further studies on the diagnostic value of patch testing for DRESS syndrome.²⁷ Therefore, additional studies need to be conducted to propose a standard for patch testing with antituberculosis drugs. If the safety and usefulness of patch testing prior to rechallenging were determined in such additional studies, we would expect that the extension of the tuberculosis treatment course would be avoided by reducing the period of rechallenging.

With the exception of 1 patient, antituberculosis drugs were discontinued in all patients due to suspected DRESS syndrome. The patient who did not discontinue ultimately died, suggesting that the discontinuation of the causative drug is the most important factor in the treatment and prognosis of DRESS syndrome patients.²⁸ The antituberculosis drugs were discontinued within a median of 18 days after the onset of DRESS syndrome in all but 1 of the 15 patients. Among the 14 patients, 7 showed improvement when sequentially dechallenging the antituberculosis drugs (“sequential dechallenging group”). The remaining 7 patients discontinued all antituberculosis drugs first and then sequentially rechallenged the antituberculosis drugs after their symptoms improved (“sequential rechallenging group”) (**Table 2**). Our comparison of the durations of the discontinuation in the sequential dechallenging and sequential rechallenging groups revealed that the median durations were 19 days (IQR 11–57) and 17 days (IQR 11–19) in the dechallenging and rechallenging groups, respectively. These results suggest that the median time of drug discontinuation was shorter in the sequential rechallenging group; however, this difference did not reach statistical significance ($P = 0.405$). Additionally, there was no statistically significant difference in the daily dose of steroids (31 mg, IQR 22–98; 33 mg, IQR 22–239, respectively; $P = 0.848$), the administration period (14 days, IQR 6–51; 11 days, IQR 7–76, respectively; $P = 0.898$), or the duration of tuberculosis treatment (198 days, IQR 145–270; 189 days, IQR 185–277, respectively; $P = 0.848$) between the 2 groups. In cases where the causative drug was identified via rechallenging, pruritus and rash developed within 3 days, and eosinophil counts increased

to $\geq 1,500/\mu\text{L}$ within 5 days. The drug-rechallenging sequence differed depending on the patient. Rechallenging was conducted at 3–5-day intervals to determine subsequent symptoms and increases in eosinophil counts. In some other cases of DRESS syndrome, the causative drugs were determined by rechallenging;^{14,16,20} however, additional prospective studies are needed to propose standardized methodologies to determine the safety and usefulness of rechallenging, including to ascertain the dosage of the rechallenged drug and the sequence of rechallenging.

DRESS syndrome can affect multiple organ systems, it most frequently affects the lymph nodes; hematologic, hepatic, renal, pulmonary and cardiac manifestations are the next most common.² In a separate study, enlarged lymph nodes, reported in 75% of the patients evaluated, was the most common finding in DRESS syndrome.²⁹ In our study, increased eosinophil counts were observed in all patients, whereas enlarged lymph nodes were found in 77.8% of the patients. Hepatic and renal manifestations followed, with prevalence of 33.3% and 26.6%, respectively. Fever often precedes skin rash,² and fever (body temperature $\geq 38^\circ\text{C}$) developed in 14 of the 15 patients. In some cases, chest or abdominal CT was performed to detect other fever-related febrile disorders. During this procedure, enlarged lymph nodes were often found, albeit inadvertently.

The etiology of DRESS syndrome has not been clearly identified thus far, but it includes the accumulation of reactive drug metabolites caused by abnormalities in the functioning of detoxification enzymes.³⁰ Given that immunosuppression is often observed at the onset of DRESS syndrome, this information suggests that primary infection (CMV-, EBV- and HHV6-infected) or sequential reactivation is involved in the etiology.³⁰

It was also observed that high RegiSCAR scores coincided with peak eosinophil counts and short latent periods. Therefore, the probability of DRESS syndrome would be expected to increase when eosinophil counts peak and the suspected clinical presentations emerge early.

There are several limitations to the present study. The results may have limited generalizability as the study was conducted in a single institution with a low prevalence rate. However, the prevalence rate of DRESS syndrome could be identified in our study by analyzing a cohort of adult tuberculosis patients in a tertiary hospital with a high prevalence of patients with tuberculosis (approximately 400 patients per year). Multi-center national studies with larger samples are needed to overcome local bias. This study was designed as a retrospective observational one, which also involves certain limitations. Prospective studies are needed to propose appropriate guidelines for a standardized method to diagnose the causative drug for DRESS syndrome, the standardization of dechallenging and rechallenging, and the steroid dosage.

In conclusion, this study was conducted in a cohort of adult patients with tuberculosis and is the first to identify the prevalence of DRESS syndrome during the course of tuberculosis treatment. DRESS syndrome patients were classified using a scoring system suggested by the RegiSCAR group. Considering the relatively long latent period of DRESS syndrome, it is cautiously suggested that the causative drug can be identified by immediately discontinuing the antituberculosis drugs during the period of low tuberculosis infectivity while maintaining the steroid treatment; in the next step, the antituberculosis drugs could be sequentially rechallenged. Patch testing to determine the safety of each antituberculosis drug before rechallenge may be useful for identifying the causative drug(s).

ACKNOWLEDGMENTS

The authors thank Ye-Jin Jung, M.D. for providing the images of the skin lesions included in the electronic medical records used for this study.

REFERENCES

1. Bocquet H, Bagot M, Roujeau JC. Drug-induced pseudolymphoma and drug hypersensitivity syndrome (drug rash with eosinophilia and systemic symptoms: DRESS). *Semin Cutan Med Surg* 1996;15:250-7.
[PUBMED](#) | [CROSSREF](#)
2. Husain Z, Reddy BY, Schwartz RA. DRESS syndrome: part I. Clinical perspectives. *J Am Acad Dermatol* 2013;68:639.e1-14.
[PUBMED](#) | [CROSSREF](#)
3. Cacoub P, Musette P, Descamps V, Meyer O, Speirs C, Finzi L, et al. The DRESS syndrome: a literature review. *Am J Med* 2011;124:588-97.
[PUBMED](#) | [CROSSREF](#)
4. Blumberg HM, Burman WJ, Chaisson RE, Daley CL, Etkind SC, Friedman LN, et al. American Thoracic Society/Centers for Disease Control and Prevention/Infectious Diseases Society of America: treatment of tuberculosis. *Am J Respir Crit Care Med* 2003;167:603-62.
[PUBMED](#) | [CROSSREF](#)
5. Schaberg T, Rebhan K, Lode H. Risk factors for side-effects of isoniazid, rifampin and pyrazinamide in patients hospitalized for pulmonary tuberculosis. *Eur Respir J* 1996;9:2026-30.
[PUBMED](#) | [CROSSREF](#)
6. Yee D, Valiquette C, Pelletier M, Parisien I, Rocher I, Menzies D. Incidence of serious side effects from first-line antituberculosis drugs among patients treated for active tuberculosis. *Am J Respir Crit Care Med* 2003;167:1472-7.
[PUBMED](#) | [CROSSREF](#)
7. Breen RA, Miller RF, Gorsuch T, Smith CJ, Schwenk A, Holmes W, et al. Adverse events and treatment interruption in tuberculosis patients with and without HIV co-infection. *Thorax* 2006;61:791-4.
[PUBMED](#) | [CROSSREF](#)
8. Kardaun SH, Sidoroff A, Valeyrie-Allanore L, Halevy S, Davidovici BB, Mockenhaupt M, et al. Variability in the clinical pattern of cutaneous side-effects of drugs with systemic symptoms: does a DRESS syndrome really exist? *Br J Dermatol* 2007;156:609-11.
[PUBMED](#) | [CROSSREF](#)
9. Kardaun SH, Sekula P, Valeyrie-Allanore L, Liss Y, Chu CY, Creamer D, et al. Drug reaction with eosinophilia and systemic symptoms (DRESS): an original multisystem adverse drug reaction. Results from the prospective RegiSCAR study. *Br J Dermatol* 2013;169:1071-80.
[PUBMED](#) | [CROSSREF](#)
10. Edwards IR, Aronson JK. Adverse drug reactions: definitions, diagnosis, and management. *Lancet* 2000;356:1255-9.
[PUBMED](#) | [CROSSREF](#)
11. Karlin E, Phillips E. Genotyping for severe drug hypersensitivity. *Curr Allergy Asthma Rep* 2014;14:418.
[PUBMED](#) | [CROSSREF](#)
12. Park HW, Kim SH, Chang YS, Kim SH, Jee YK, Lee AY, et al. The Fas signaling pathway is a common genetic risk factor for severe cutaneous drug adverse reactions across diverse drugs. *Allergy Asthma Immunol Res* 2018;10:555-61.
[PUBMED](#) | [CROSSREF](#)
13. Kim SH, Lee SK, Kim SH, Park HW, Chang YS, Lee KW, et al. Antituberculosis drug-induced hypersensitivity syndrome and its association with human leukocyte antigen. *Tuberculosis (Edinb)* 2013;93:270-4.
[PUBMED](#) | [CROSSREF](#)
14. Allouchery M, Logerot S, Cottin J, Pralong P, Villier C, Ben Saïd B, et al. Antituberculosis drug-associated DRESS: a case series. *J Allergy Clin Immunol Pract* 2018;6:1373-80.
[PUBMED](#) | [CROSSREF](#)
15. Lee JH, Park HK, Heo J, Kim TO, Kim GH, Kang DH, et al. Drug rash with eosinophilia and systemic symptoms (DRESS) syndrome induced by celecoxib and anti-tuberculosis drugs. *J Korean Med Sci* 2008;23:521-5.
[PUBMED](#) | [CROSSREF](#)

16. Lee SW, Yoon NB, Park SM, Lee SM, Um SJ, Lee SK, et al. Antituberculosis drug-induced drug rash with eosinophilia and systemic symptoms syndrome confirmed by patch testing. *J Investig Allergol Clin Immunol* 2010;20:631-2.
[PUBMED](#)
17. Ogawa K, Morito H, Kobayashi N, Fukumoto T, Asada H. Case of drug-induced hypersensitivity syndrome involving multiple-drug hypersensitivity. *J Dermatol* 2012;39:945-6.
[PUBMED](#) | [CROSSREF](#)
18. Jung ES, Choi B, Choi HS, Kim BH, Ha M, Shin D, et al. Drug reaction with eosinophilia and systemic symptoms (DRESS) syndrome induced by ethambutol and rifampin. *Infect Chemother* 2012;44:197-200.
[CROSSREF](#)
19. Shebe K, Ngwanya MR, Gantsho N, Lehloenya RJ. Severe recurrence of drug rash with eosinophilia and systemic symptoms syndrome secondary to rifampicin patch testing in a human immunodeficiency virus-infected man. *Contact Dermat* 2014;70:125-7.
[PUBMED](#) | [CROSSREF](#)
20. Lee JY, Seol YJ, Shin DW, Kim DY, Chun HW, Kim BY, et al. A case of the drug reaction with eosinophilia and systemic symptom (DRESS) following isoniazid treatment. *Tuberc Respir Dis (Seoul)* 2015;78:27-30.
[PUBMED](#) | [CROSSREF](#)
21. Zhang SN, He QX, Yang NB, Ni SL, Lu MQ. Isoniazid-induced drug rash with eosinophilia and systemic symptoms (DRESS) syndrome presenting as acute eosinophilic myocarditis. *Intern Med* 2015;54:1227-30.
[PUBMED](#) | [CROSSREF](#)
22. Kim H, Bang ES, Lim SK, Lee JM. DRESS syndrome and acute generalized exanthematous pustulosis induced by antituberculosis medications and moxifloxacin: case report. *Int J Clin Pharmacol Ther* 2016;54:808-15.
[PUBMED](#) | [CROSSREF](#)
23. Yoshioka Y, Hanafusa T, Namiki T, Nojima K, Amano M, Tokoro S, et al. Drug-induced hypersensitivity syndrome by ethambutol: a case report. *J Dermatol* 2016;43:971-2.
[PUBMED](#) | [CROSSREF](#)
24. Orenstein EW, Basu S, Shah NS, Andrews JR, Friedland GH, Moll AP, et al. Treatment outcomes among patients with multidrug-resistant tuberculosis: systematic review and meta-analysis. *Lancet Infect Dis* 2009;9:153-61.
[PUBMED](#) | [CROSSREF](#)
25. Lehloenya RJ, Dheda K. Cutaneous adverse drug reactions to anti-tuberculosis drugs: state of the art and into the future. *Expert Rev Anti Infect Ther* 2012;10:475-86.
[PUBMED](#) | [CROSSREF](#)
26. Barbaud A, Gonçalo M, Bruynzeel D, Bircher A. Guidelines for performing skin tests with drugs in the investigation of cutaneous adverse drug reactions. Proposed by the Working party of the ESCD for the study of skin testing in investigating cutaneous adverse drug reactions. *Contact Dermat* 2001;45:321-8.
[PUBMED](#) | [CROSSREF](#)
27. Elzagallaai AA, Knowles SR, Rieder MJ, Bend JR, Shear NH, Koren G. Patch testing for the diagnosis of anticonvulsant hypersensitivity syndrome: a systematic review. *Drug Saf* 2009;32:391-408.
[PUBMED](#) | [CROSSREF](#)
28. Garcia-Doval I, LeCleach L, Bocquet H, Otero XL, Roujeau JC. Toxic epidermal necrolysis and Stevens-Johnson syndrome: does early withdrawal of causative drugs decrease the risk of death? *Arch Dermatol* 2000;136:323-7.
[PUBMED](#) | [CROSSREF](#)
29. Gentile I, Talamo M, Borgia G. Is the drug-induced hypersensitivity syndrome (DIHS) due to human herpesvirus 6 infection or to allergy-mediated viral reactivation? Report of a case and literature review. *BMC Infect Dis* 2010;10:49.
[PUBMED](#) | [CROSSREF](#)
30. Hirahara K, Kano Y, Mitsuyama Y, Takahashi R, Kimishima M, Shiohara T. Differences in immunological alterations and underlying viral infections in two well-defined severe drug eruptions. *Clin Exp Dermatol* 2010;35:863-8.
[PUBMED](#) | [CROSSREF](#)